

IMAGINE SPECTACULAR FAÇADES



TRESPA® METEON®

HOW YOUR BUILDING TODAY WILL STAND OUT TOMORROW

GOOD DESIGN STARTS WITH INSPIRATION, EXCEPTIONAL VISION AND PROVOCATIVE THINKING. IT COMES TO LIFE WITH GREAT MATERIALS, FINISHES, AND SYSTEMS. TRESPA® METEON® STANDS OUT IN VERTICAL EXTERIOR WALL COVERINGS SUCH AS FAÇADE CLADDING, BALCONY PANELING, SUNBLINDS, AS WELL AS HORIZONTAL EXTERIOR CEILING APPLICATIONS. WITH TRESPA® METEON® YOUR BUILDING TODAY WILL STAND OUT TOMORROW.

WEATHER RESISTANCE & COLOR STABILITY

TRESPA® METEON® PERFORMS EXCEPTIONALLY WELL OUTDOORS AND IT STAYS LOOKING GREAT FOR MANY YEARS. SUN AND RAIN WILL HAVE NO SIGNIFICANT EFFECT ON THE PANEL'S SURFACE.

SOLID & STURDY

TRESPA® METEON® IS HIGHLY SCRATCH AND IMPACT RESISTANT. THE PANELS ARE CONSISTENT, HIGH-DENSITY THROUGHOUT, EASILY MACHINABLE, AND WORKABLE LIKE HARDWOOD.

LOW MAINTENANCE & EASY TO CLEAN

THE CLOSED SURFACE OF TRESPA® METEON® PRACTICALLY WITHSTANDS DIRT ACCUMULATION, KEEPING THE PRODUCT SMOOTH AND EASY TO CLEAN.

LONGEVITY

CLEANABILITY

SUSTAINABILITY



TRESPA® METEON® CONTAINS UP TO **70% NATURAL FIBERS**

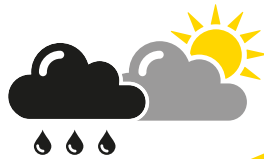


WIDE RANGE OF COLORS

TRESPA® METEON® IS AVAILABLE IN MANY STANDARD COLORS, FINISHES, SIZES, AND THICKNESSES AND EVEN CUSTOM-MADE PROJECT COLORS. STANDARD AND ENHANCED FIRE-RETARDANT GRADES ARE AVAILABLE.



DESIGN FREEDOM



MATERIAL TECHNOLOGY & KNOW-HOW

A COMBINATION OF HIGH QUALITY MATERIALS, ADVANCED PROCESS TECHNOLOGIES (I.E. EBC), MORE THAN 55 YEARS EXPERIENCE, AND KNOW-HOW MAKES TRESPA® METEON® AN EXTREMELY VERSATILE PRODUCT.

HIGH QUALITY



ORGANISATION RELIABILITY

98%
RELIABILITY OF SUPPLY
WITHIN THE CONFIRMED
LEAD TIME



STRONG
FOCUS ON
SERVICE



10
YEAR
PRODUCT
GUARANTEE



TRESPA INTERNATIONAL 55 YEARS OF BUILDING EXCELLENCE

TRESPA INTERNATIONAL B.V. IS A LEADING INNOVATOR IN THE FIELD OF ARCHITECTURAL MATERIALS, RECOGNIZED INTERNATIONALLY AS A PREMIER DEVELOPER OF HIGH QUALITY PANELS FOR EXTERIOR CLADDING AND DECORATIVE FAÇADES. SINCE ITS FOUNDING IN 1960, TRESPA HAS WORKED CLOSELY WITH ARCHITECTS, DESIGNERS, INSTALLERS, DISTRIBUTORS AND END USERS GLOBALLY. TRESPA BELIEVES IN PRODUCT INNOVATION, COMBINING QUALITY MANUFACTURING TECHNOLOGIES WITH SMART SOLUTIONS FOR ARCHITECTURAL APPLICATIONS.

TRESPA® METEON®

Trespa® Meteon® is a decorative high-pressure compact laminate (HPL) with an integral surface manufactured using Trespa's unique in-house technology, Electron Beam Curing (EBC). The blend of up to 70% natural fibers and thermosetting resins, manufactured under high pressures and temperatures yields a highly stable, dense panel with good strength-to-weight ratios. The entire Trespa® Meteon® product range is now available with PEFC™ or FSC™ certification upon request, in restricted quantities and certain jurisdictions.

VENTILATED FAÇADES

Trespa® Meteon® panels are perfect for use in innovative and functional ventilated façade systems. Used on its own or as a highlight in combination with other materials, Trespa® Meteon® determines the look and underlines the qualities of a building. Trespa is at the forefront of cutting-edge building techniques. Ventilating façades are more than a design gesture - they may provide energy efficient, long-lasting properties.

INDOOR AIR QUALITY

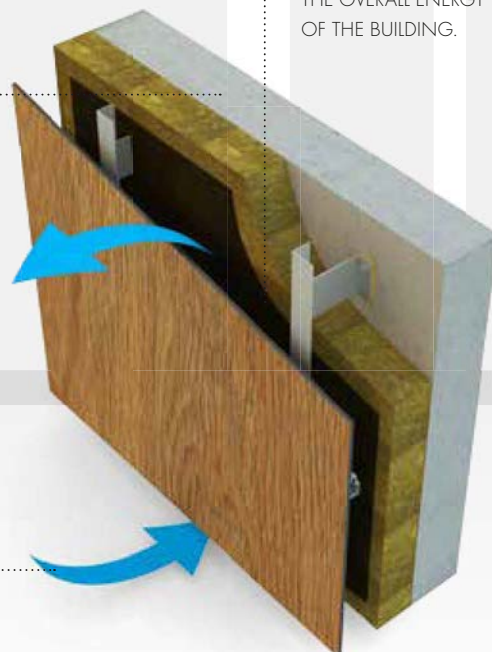
RESIDENTS AND USERS NOT ONLY FIND THEMSELVES IN A LOW-MAINTENANCE-ENVIRONMENT, BUT THE DRY AND COMFORTABLE CONDITIONS OF THE BUILDING MAY ALSO HAVE A POSITIVE CONTRIBUTION TO THE INDOOR ENVIRONMENT.

CONTINUOUS AIRFLOW

A CONTINUOUS AIRFLOW DRAWS AIR THROUGH THE CAVITY, AIDING IN THE REMOVAL OF THE HEAT AND MOISTURE FROM RAIN OR CONDENSATION.

RAINSCREEN

THE RAINSCREEN ALSO BLOCKS PARTS OF THE SOLAR RADIATION AND ACCOMMODATES CONTINUOUS INSULATION, WHICH MAY IMPROVE THE OVERALL ENERGY PERFORMANCE OF THE BUILDING.

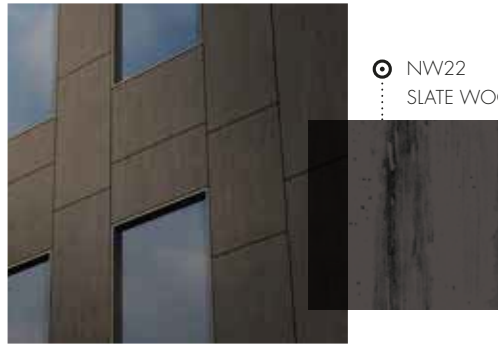


VARIATIONS OF GREY

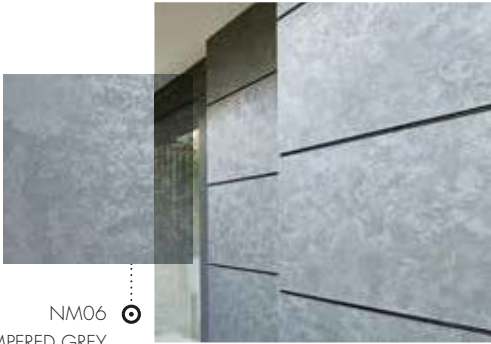
NEW LUMEN

190.0.0

Diffuse - Oblique - Specular



NW22
SLATE WOOD

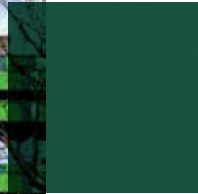


NM06
TEMPERED GREY



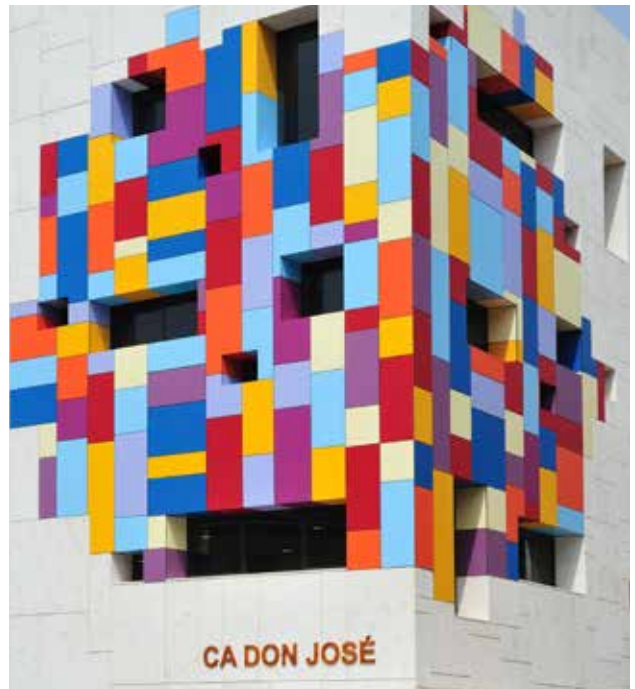
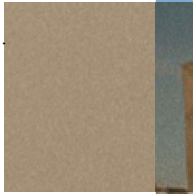
NA12
NATURAL CHALKSTONE

◎ COLORING THE WORLD



◎ A32.7.2
DARK GREEN

◎ M06.4.1
AMBER



◎ PROJECT
COLOR

THE NATURAL TOUCH



NW21
AUSTRALIAN PINE

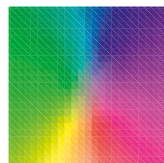


NW08
ITALIAN WALNUT



UNI COLOURS

A28.2.1 Aquamarine	A22.3.1 Ocean Grey	A24.0.3 Polar Blue	A23.0.4 Mineral Blue	A22.2.4 Powder Blue	A22.2.1 Bluish Grey	A21.1.0 Winter Grey	A05.0.0 Pure White
A32.2.1 Translucent Green	A24.4.1 Steel Blue	A22.1.6 Royal Blue	A22.4.4 Brilliant Blue	A21.5.4 Cobalt Blue	A22.6.2 Dark Denim	A20.2.3 Light Viola	A03.4.0 Silver Grey
A30.3.2 Verdigris	A35.4.0 Cactus Green	A28.6.2 Mid Green	A26.5.4 Pacific	A20.7.2 Dark Blue	A21.7.0 Steel Grey	A20.5.2 Lavender Blue	A21.5.1 Mid Grey
A37.2.3 Spring Green	A33.3.6 Brilliant Green	A32.7.2 Dark Green	A34.8.1 Forest Green	A90.0.0 Black	A25.8.1 Anthracite Grey	A05.5.0 Quartz Grey	A16.5.1 Mauve
A03.1.0 Pastel Grey	A37.0.8 Lime Green	A36.3.5 Turf Green	A08.8.1 Dark Brown	A14.7.2 Deep Red Brown	A11.8.0 Ceramic Greige	A06.7.1 Natural Greige	A06.5.1 Toscana Greige
A05.1.1 Stone Beige	A41.0.6 Mojito Green	A08.4.5 Rusty Red	A09.6.4 Mahogany Red	A12.6.3 Wine Red	A12.3.7 Carmine Red	A10.4.5 Sienna Brown	A10.6.1 Taupe
A04.0.0 Cream White	A04.0.5 Zinc Yellow	A06.3.5 Ochre	A10.1.8 Red Orange	A12.1.8 Passion Red	A17.3.5 Cyclam	A11.4.4 English Red	A08.3.1 Stone Grey
A05.1.0 Papyrus White	A07.1.1 Sand	A05.1.2 Champagne	A04.1.7 Gold Yellow	A05.1.4 Sun Yellow	A08.2.3 Salmon	A10.3.4 Terra Cotta	A08.2.1 Mid Beige
A03.0.0 White	A04.0.1 Pearl Yellow	A04.0.2 Pale Yellow					



PROJECT COLORS

COLOR YOUR IMAGINATION

Trespa® Miteon® architectural panels are available in a wide choice of standard colors and effects. To create façades that are even more individual and expressive, Trespa® Miteon® panels can be custom-made in special project colors. For more information please contact your local Trespa representative.

METALLICS



NATURALS



WOOD DECORS



NEW LUMEN



To experience the effect of the Lumen finishes, we advise to order samples.

UNI COLOURS

Color code	Color name	Satin				Rock	
A03.0.0	White	■	■	■	■	■	■
A03.1.0	Pastel Grey	■	■	■	■	■	■
A03.4.0	Silver Grey	■	■	■	■	■	■
A04.0.0	Cream White	■	■	■	■	■	■
A04.0.1	Pearl Yellow	■	■	■	■	■	■
A04.0.2	Pale Yellow	■	■	■	■	■	■
A04.0.5	Zinc Yellow	■	■	■	■	■	■
A04.1.7	Gold Yellow	■	■	■	■	■	■
A05.0.0	Pure White	■	■	■	■	■	■
A05.1.0	Papyrus White	■	■	■	■	■	■
A05.1.1	Stone Beige	■	■	■	■	■	■
A05.1.2	Champagne	■	■	■	■	■	■
A05.1.4	Sun Yellow	■	■	■	■	■	■
A05.5.0	Quartz Grey	■	■	■	■	■	■
A06.3.5	Ochre	■	■	■	■	■	■
A06.5.1	Toscana Greige	■	■	■	■	■	■
A06.7.1	Natural Greige	■	■	■	■	■	■
A07.1.1	Sand	■	■	■	■	■	■
A08.2.1	Mid Beige	■	■	■	■	■	■
A08.2.3	Salmon	■	■	■	■	■	■
A08.3.1	Stone Grey	■	■	■	■	■	■
A08.4.5	Rusty Red	■	■	■	■	■	■
A08.8.1	Dark Brown	■	■	■	■	■	■
A09.6.4	Mahogany Red	■	■	■	■	■	■
A10.1.8	Red Orange	■	■	■	■	■	■
A10.3.4	Terra Cotta	■	■	■	■	■	■
A10.4.5	Sienna Brown	■	■	■	■	■	■
A10.6.1	Taupe	■	■	■	■	■	■
A11.4.4	English Red	■	■	■	■	■	■
A11.8.0	Ceramic Greige	■	■	■	■	■	■
A12.1.8	Passion Red	■	■	■	■	■	■
A12.3.7	Carmine Red	■	■	■	■	■	■
A12.6.3	Wine Red	■	■	■	■	■	■
A14.7.2	Deep Red Brown	■	■	■	■	■	■
A16.5.1	Mauve	■	■	■	■	■	■
A17.3.5	Cyclam	■	■	■	■	■	■
A20.2.3	Light Viola	■	■	■	■	■	■
A20.5.2	Lavender Blue	■	■	■	■	■	■
A20.7.2	Dark Blue	■	■	■	■	■	■
A21.1.0	Winter Grey	■	■	■	■	■	■
A21.5.1	Mid Grey	■	■	■	■	■	■
A21.5.4	Cobalt Blue	■	■	■	■	■	■
A21.7.0	Steel Grey	■	■	■	■	■	■
A22.1.6	Royal Blue	■	■	■	■	■	■
A22.2.1	Bluish Grey	■	■	■	■	■	■
A22.2.4	Powder Blue	■	■	■	■	■	■
A22.3.1	Ocean Grey	■	■	■	■	■	■
A22.4.4	Brilliant Blue	■	■	■	■	■	■
A22.6.2	Dark Denim	■	■	■	■	■	■
A23.0.4	Mineral Blue	■	■	■	■	■	■
A24.0.3	Polar Blue	■	■	■	■	■	■
A24.4.1	Steel Blue	■	■	■	■	■	■
A25.8.1	Anthracite Grey	■	■	■	■	■	■
A26.5.4	Pacific	■	■	■	■	■	■
A28.2.1	Aquamarine	■	■	■	■	■	■
A28.6.2	Mid Green	■	■	■	■	■	■
A30.3.2	Verdigris	■	■	■	■	■	■
A32.2.1	Translucent Green	■	■	■	■	■	■
A32.7.2	Dark Green	■	■	■	■	■	■
A33.3.6	Brilliant Green	■	■	■	■	■	■
A34.8.1	Forest Green	■	■	■	■	■	■
A35.4.0	Cactus Green	■	■	■	■	■	■
A36.3.5	Turf Green	■	■	■	■	■	■
A37.0.8	Lime Green	■	■	■	■	■	■
A37.2.3	Spring Green	■	■	■	■	■	■
A41.0.6	Mojito Green	■	■	■	■	■	■
A90.0.0	Black	■	■	■	■	■	■

For available sheet sizes and thicknesses for the above finishes, please check trespa.info for the detailed and up to date Delivery Program and Material Property Datasheet. Alternatively you can use the Product Selector on trespa.com (after choosing the country where the project is located).

METALLICS

Color code	Color name	Satin		Rock		Gloss
M04.4.1	Titanium Silver	■	■	■	■	■
M05.5.1	Titanium Bronze	■	■	■	■	■
M06.4.1	Amber	■	■	■	■	■
M12.4.2	Garnet Red	■	■	■	■	■
M20.4.2	Northern Light	■	■	■	■	■
M21.3.4	Azurite Blue	■	■	■	■	■
M21.8.1	Graphite Grey	■	■	■	■	■
M24.3.3	Lagoon	■	■	■	■	■
M35.7.1	Malachite Green	■	■	■	■	■
M40.4.3	Mustard Yellow	■	■	■	■	■
M51.0.1	Aluminium Grey	■	■	■	■	■
M51.0.2	Urban Grey	■	■	■	■	■
M53.0.1	Copper Red	■	■	■	■	■
M53.0.2	Copper Yellow	■	■	■	■	■

Trespa® Meteor® Metallics panels feature a directional colored surface.

NATURALS

Color code	Color name	Matt	Matt-Rock
NA11	French Limestone	■	■
NA12	Natural Chalkstone	■	■
NA13	Silver Quartzite	■	■
NA14	Weathered Basalt	■	■
NA15	Indian Terra Cotta	■	■
NM01	Rusted Brown	■	■
NM02	Forged Alloy	■ ★	■
NM03	Corroded Green	■	■
NM04	Sintered Alloy	■ ★	■
NM05	Hardened Brown	■ ★	■
NM06	Tempered Grey	■ ★	■
NM07	Casted Grey	■ ★	■

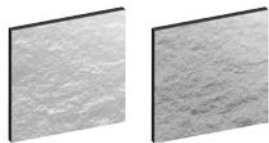
Trespa® Meteor® Naturals panels feature a directional colored surface.

★ Decors have gloss elements in the surface.

FINISHES

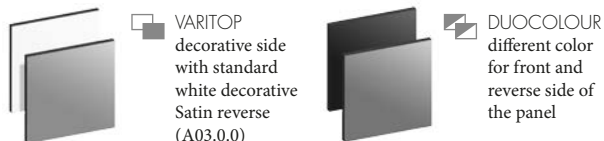
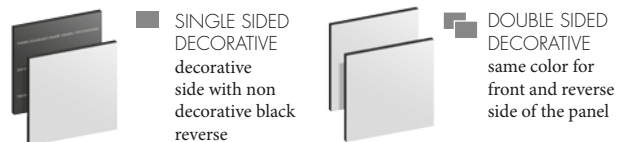


SATIN GLOSS MATT



ROCK MATTROCK

TYPES



WOOD DECORS

Color code	Color name	Satin		Matt	
NW02	Elegant Oak	■	■	■	■
NW03	Harmony Oak	■	■	■	■
NW04	Pacific Board	■	■	■	■
NW05	Loft Brown	■	■	■	■
NW06	Montreux Amber	■	■	■	■
NW07	Montreux Sunglow	■	■	■	■
NW08	Italian Walnut	■	■	■	■
NW09	Wenge	■	■	■	■
NW10	English Cherry	■	■	■	■
NW11	Santos Palisander	■	■	■	■
NW12	Natural Bagenda	■	■	■	■
NW13	Country Wood	■	■	■	■
NW14	French Walnut	■	■	■	■
NW15	Milano Sabbia	■	■	■	■
NW16	Milano Terra	■	■	■	■
NW17	Milano Grigio	■	■	■	■
NW18	Light Mahogany	■	■	■	■
NW19	Dark Mahogany	■	■	■	■
NW20	Bleached Pine	■	■	■	■
NW21	Australian Pine	■	■	■	■
NW22	Slate Wood	■	■	■	■
NW23	Nordic Black	■	■	■	■
NW24	Greyed Cedar	■	■	■	■
NW25	Hesbania	■	■	■	■
NW26	Core Ash	■	■	■	■
NW27	Denver Oak	■	■	■	■
NW28	Halmstad	■	■	■	■
NW29	Woodstone	■	■	■	■

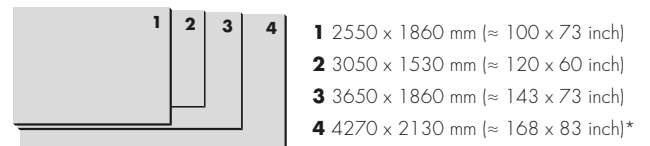
Trespa® Meteor® Wood Decors panels feature a directional colored surface. The grain of Trespa® Meteor® Wood Decors runs the length direction of the panel.

NEW LUMEN

Color code	Color name	Diffuse	Oblique	Specular
L05.0.0	Athens White	■	■	■
L05.1.2	Barcelona Beige	■	■	■
L06.5.1	Italian Greige	■	■	■
L09.6.4	India Brown	■	■	■
L11.4.4	Arizona Red	■	■	■
L21.5.1	London Grey	■	■	■
L25.8.1	New York Grey	■	■	■
L90.0.0	Metropolis Black	■	■	■

Trespa® Meteor® Lumen panels are not available in other finishes.

SIZES



1 2550 x 1860 mm (≈ 100 x 73 inch)

2 3050 x 1530 mm (≈ 120 x 60 inch)

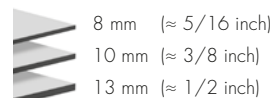
3 3650 x 1860 mm (≈ 143 x 73 inch)

4 4270 x 2130 mm (≈ 168 x 83 inch)*

*The large size of this panel allows an efficient machining of the product.

Note: Full size panels feature a squareness tolerance.

THICKNESSES



8 mm (≈ 5/16 inch)

10 mm (≈ 3/8 inch)

13 mm (≈ 1/2 inch)

CONTACT US

TRESPA INTERNATIONAL B.V.

P.O. Box 110, 6000 AC Weert
Wetering 20, 6002 SM Weert
The Netherlands
www.trespa.com

TRESPA NORTH AMERICA LTD.

62 Greene Street (Ground Floor)
New York, NY 10012
United States of America
Tel: +1 800 487-3772
Fax: +1 866 298 3499
Info.NorthAmerica@Trespa.com

TRESPA UK LTD.

35 Calthorpe Road
Edgbaston
Birmingham, B15 1TS
United Kingdom
Tel: 0808-2340268
Fax: 0808-2341377
Info.UK@Trespa.com

VISIT US

TRESPA DESIGN CENTRE NEW YORK

62 Greene Street (Ground Floor)
New York, NY 10012
United States of America
Tel: +1 212 334 6888
Fax: +1 866 298 3499
TDC.NewYork@Trespa.com
www.trespa.com/us/tdc

TRESPA DESIGN CENTRE WEERT

Wetering 20
6002 SM Weert
The Netherlands
Tel: +31 (0) 495 458 845
TDC.Weert@Trespa.com
www.trespa.com/us/tdc

TRESPA DESIGN CENTRE BARCELONA

Calle Ribera 5,
08003 Barcelona
Spain
Tel: +34 (0) 93 295 4193
Fax: +34 (0) 93 116 3300
TDC.Barcelona@Trespa.com
www.trespa.com/us/tdc

TRESPA DESIGN CENTRE SANTIAGO

Eliodoro Yáñez 2831
Torre A - Local 1
Providencia, Santiago
Chile
Tel: +56 2 4069990
TDC.Santiago@Trespa.com
www.trespa.com/us/tdc

FOLLOW US



DISCLAIMER

GENERAL

These terms apply to the use of this document and such use automatically means that the other party agrees to these terms. The information provided by Trespa International B.V. ("Trespa") in this document is solely indicative. Trespa is unable to warrant the accuracy and completeness of this information. Trespa may change the information included in this document at any time and without further notice. Trespa's customers and third parties must ascertain that they have the most recent document (for the most recent version, please consult: www.trespa.com). No rights can be derived from the information provided; the use of the information is at the other party's risk and responsibility. Trespa does not warrant that the information in this document is suitable for the purpose for which it is consulted by the other party. This document does not contain any design, structural calculation, estimate or other warranty or representation that customers and third parties may rely on. This document does not guarantee any properties of Trespa products. Colors used in Trespa's communications (including but not limited to printed matter) and in samples of the Trespa products may differ from the colors of the Trespa products to be supplied. Samples are not intended for use in product tests and are

not representative of characteristics of the Trespa products. Trespa's products and samples are produced within the specified color tolerances and the colors (of production batches) may differ, even if the same color is used. The viewing angle also influences the color perception. Metallic panels feature a surface whose color appears to change based on the direction from which it is viewed. The specified color stability and color specifications relate only to the decorative surface of the Trespa products, not to the core material and samples of the Trespa products. Trespa products are delivered ex-works with straight, sawn sides. Customers and third parties must have a professional adviser inform them about (the suitability of) the Trespa products for all desired applications and about applicable laws and regulations. Trespa does not warrant the above. The most recent version of the current delivery program and the Material Properties Datasheet can be found at www.trespa.info. Only the information in the most recent and valid Material Properties Datasheet should be used to select and provide advice regarding Trespa products. Trespa reserves the right to change (the specifications for) its products without prior notice.

LIABILITY

Trespa is not liable (neither contractual nor

non-contractual) for any damage arising from or related to the use of this document, except if and to the extent that such damage is the result of willful misconduct or gross negligence on the part of Trespa and/or its management. The limitation of liability applies to all parties affiliated with Trespa, including but not limited to its officers, directors, employees, affiliated enterprises, suppliers, distributors, agents, and representatives.

GENERAL CONDITIONS

All oral and written statements, offers, quotations, sales, supplies, deliveries and/or agreements and all related activities of Trespa are governed by the Trespa General Terms and Conditions of Sale (*Algemene verkoopvoorwaarden Trespa International B.V.*) filed with the Chamber of Commerce and Industry for Noord- en Midden-Limburg in Venlo (NL) on 11 April 2007 under number 24270677, which can be found on and downloaded from the Trespa website, www.trespa.com/documentation. All oral and written statements, offers, quotations, sales, supplies, deliveries and/or agreements and all related work of Trespa North America, Ltd. are governed by the Trespa North America General Terms and Conditions of Sale, which can be found on and downloaded from the Trespa website, www.trespa.com/documentation.

com/documentation. A copy of these general conditions of sale will be provided free of charge on request. All general terms and conditions other than the conditions mentioned above are dismissed and do not apply, regardless of whether such terms and conditions are referred to on requests for offers, offer confirmations, stationery and/or other documents of the other party, even if Trespa does not expressly object to such terms and conditions

INTELLECTUAL PROPERTY

All intellectual property rights and other rights regarding the content of this document (including logos, text and photographs) are owned by Trespa and/or its licensors. Any use of the content of this document, including distribution, reproduction, disclosure, storage in an automated data file or the dispatch of such a file without Trespa's prior written consent is explicitly prohibited. * Trespa, Meteon, Athlon, TopLab, TopLab^{PLUS}, TopLab^{ECO-FIBRE}, Virtuon, Izeon, Volkern, Trespa Essentials and Mystic Metallics are registered trademarks of Trespa.

QUESTIONS

Should you have any questions or comments, please do not hesitate to contact Trespa.

VERSION 5.0 ■ BROCHURE CODE V2405 ■ DATE 12-2015



VISIT TRESPA.COM FOR THE MOST
UP TO DATE VERSION OF THIS DOCUMENT.

TRESPA®